

Product specifications



- Sample: gastric biopsy specimen
- Test principle: *H. pylori* urease activity
- Test components: test plate with gel medium, instruction for use
- Storage: 2-8 °C
- Quality control: positive control available

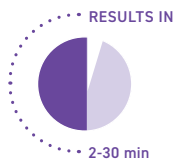


In the United States and Japan for research use only.

Reference

1. Vauhkonen M, Helske T et al. *Helicobacter* 2008; 13 (5): 473

BIOHIT Helicobacter Pylori quick test



Ordering details:

REF	Product
602015	<i>Helicobacter pylori</i> quick test, 50 tests
602017	Positive control reagent

CONTACT

Biohit Oyj
Laippatie 1
00880 Helsinki
Finland
Tel. +358 9 773 861
info@biohit.fi

Biohit HealthCare Srl
Via Boncompagni, 3
20139 Milano
Italy
Tel +39 02 38238113
Fax +39 02 38236521
info.italy@biohit.fi

Biohit HealthCare Ltd.
Pioneer House, North Rd
Ellesmere Port, CH65 1AD,
United Kingdom
Tel. +44 151 550 4 550
Fax. +44 151 550 4 551
info@biohithealthcare.co.uk

biohithealthcare.com

BIOHIT
Innovating for Health

BIOHIT Helicobacter Pylori quick test



EFFORTLESS BIOPSY TESTING



490062en-03 © BIOHIT OYJ 08/2023

BIOHIT
Innovating for Health

BIOHIT Helicobacter Pylori quick test

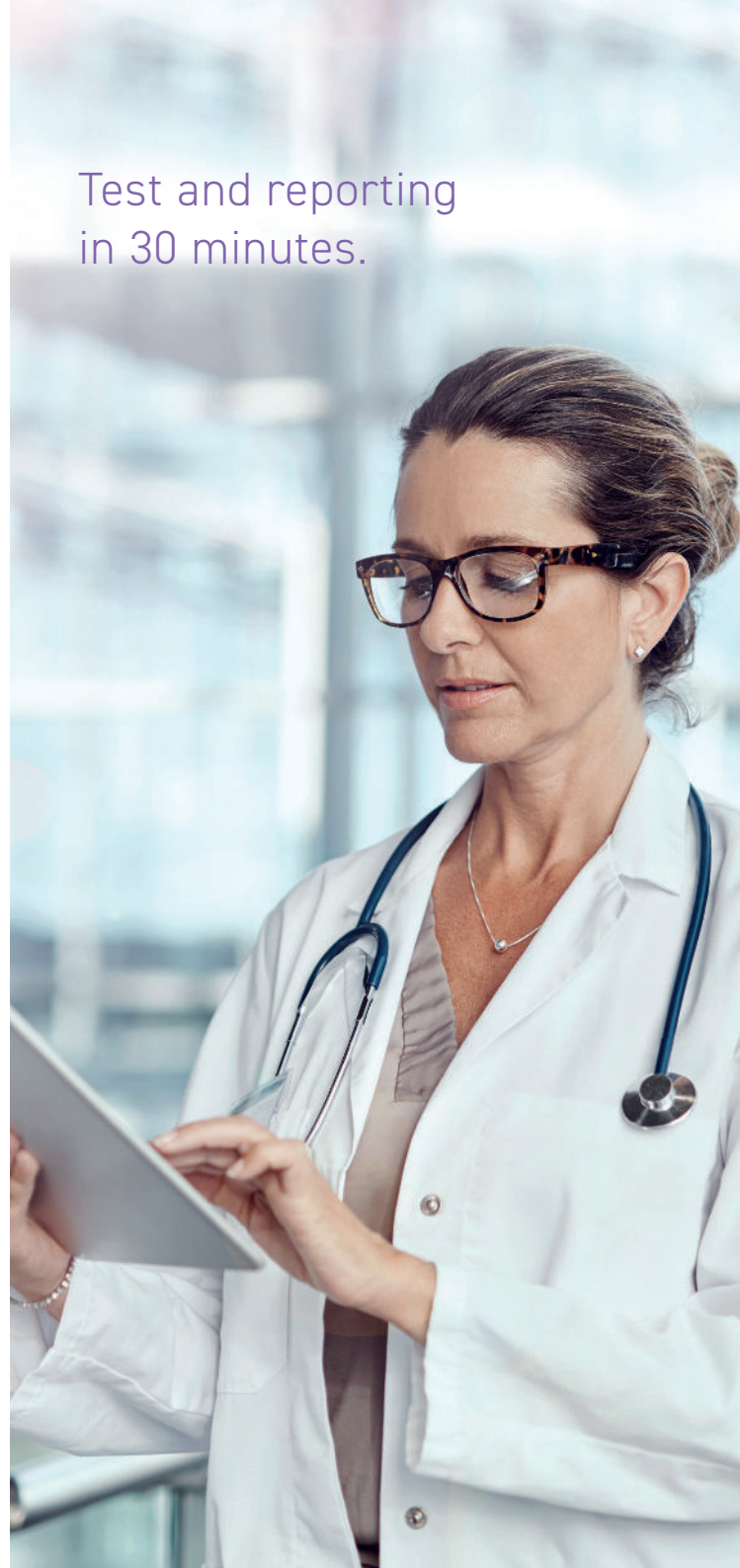
Easy testing from a biopsy specimen

The *H. pylori* quick test is a one-step test method to detect *H. pylori* infection from a biopsy sample during gastroscopy. The *H. pylori* quick test can be used to diagnose *H. pylori* infection or to determine the success of eradication therapy.

- Testing and reporting during gastroscopy
- One-step test procedure
- Positive results in 2 min (neg. 30 min)
- Sensitivity 100 %, Specificity 93 %, Accuracy 96 % (ref. to histology)¹
- Clear indicator color – easy visual interpretation

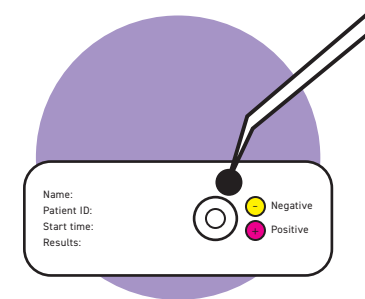
Using the *H. pylori* quick test is an easy one-step procedure. The biopsy specimen is immersed into the gel medium, and if *H. pylori* urease is present in the specimen, a red color develops in the gel. Positive results are ready in only 2 minutes, and the final confirmation of a negative result can be made at 30 minutes. Interpretation of the indicator color is simple and does not require any specialist training.

Test and reporting
in 30 minutes.



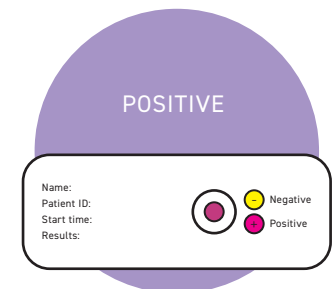
One step test protocol

1. Place biopsy specimen into the gel.



2. Wait for 2 minutes for a positive result indicated by an intensive red color.

Positive



3. If no red color develops, continue the incubation for a maximum of 30 minutes to fully confirm a negative result.

Negative

